



Emmy award winning NUCONTEXT is renowned in the entertainment marketing and production field for its teamwork, keen creativity and production expertise, good vibes, and friendly, collaborative spirit. With a high comfort level expressed by every one of its collaborators, NUCONTEXT prides itself on its ability to be perceived by each of its high profile clients as a natural extension of their own in-house creative marketing teams.

Founded by noted producer Angela Guice in Hollywood in 2006, the production agency specializes in the conception, production, and post production of promotional campaigns, including live action shoots, promos, branded content, commercials, and music videos for television networks, streaming services, theatrical films, Fortune 500 brands, music labels, multi-media corporations and their products.

Over the course of their 15 year history, NUCONTEXT has earned a stellar reputation within the marketing industry for crafting award-winning promotional television and advertising campaigns. The agency's experienced creative team, under Angela's supervision, works closely with each of its clients to help them conceive, implement and realize their vision. The agency provides the writing, direction, production and post production for live action promo shoots, as well as full-service editorial, motion graphics, and audio post. Utilizing state-of-the-art equipment located under one roof, the NUCONTEXT team plays a critical role -- from concept to completion—in the lifespan of each project.

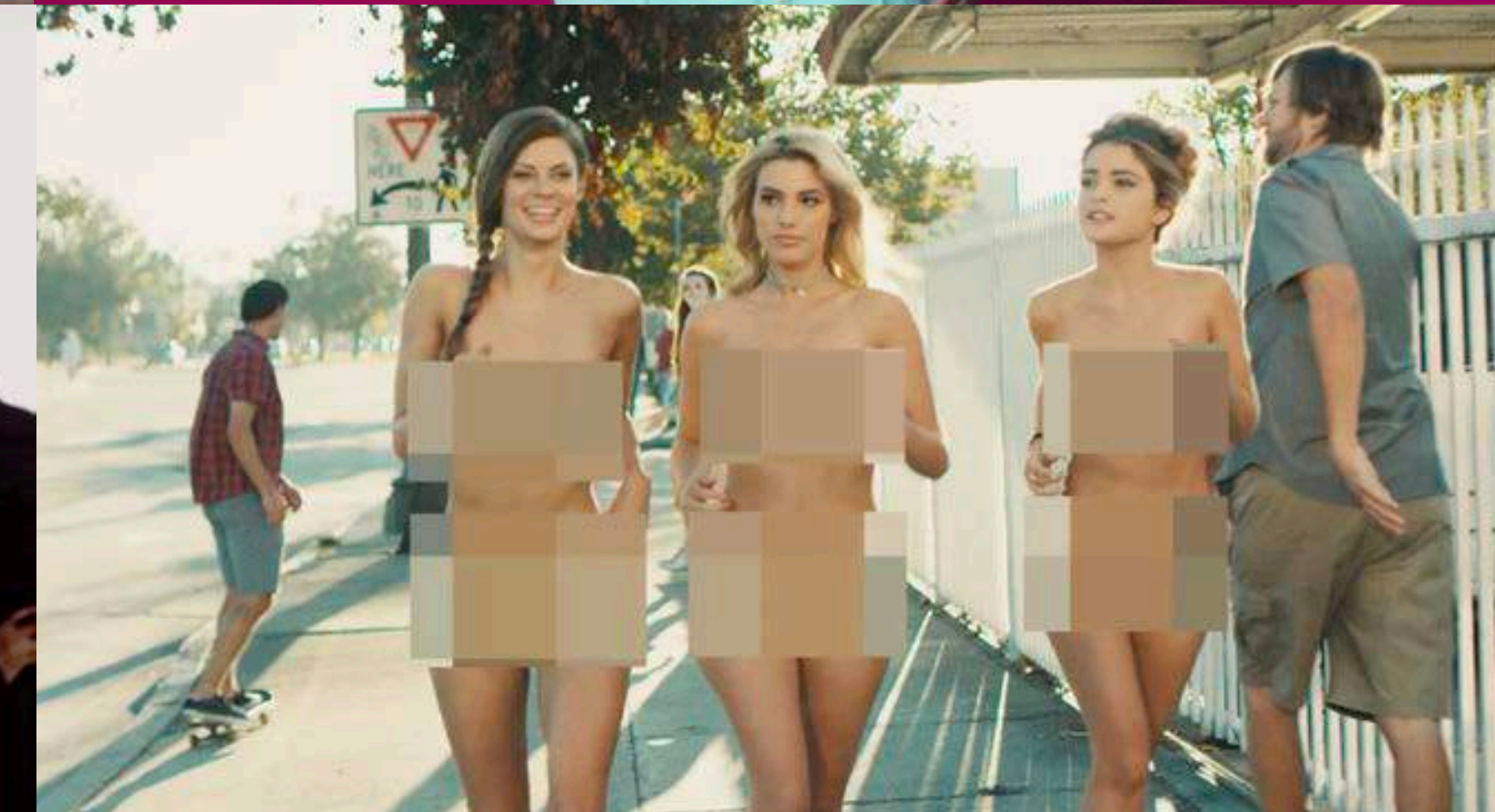
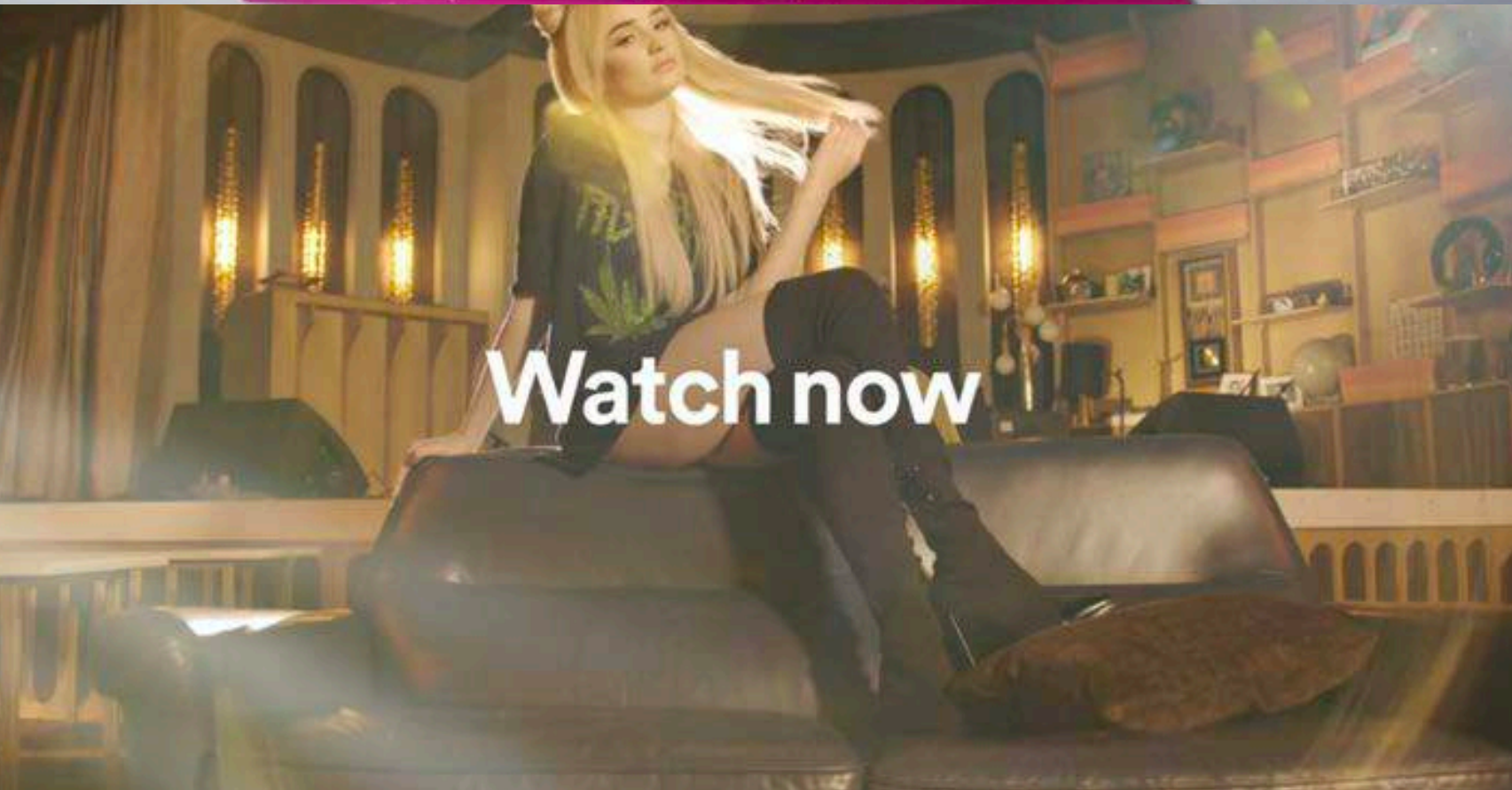
Major cable television networks and entertainment companies including The Walt Disney Company (Disney Channel / ABC / Disney + / Freeform / Disney JR / Disney Parks and Resorts / Disney Cruise Line), Netflix, HULU, Viacom (BET / CMT / Logo / Paramount Network), A&E Networks, TNT, TBS, TruTV, Oxygen, E!, NBC Universal Cable Networks, Spotify and AMC Networks to name a few.

NUCONTEXT is 100% certified women owned business by the nationally recognized Women's Business Enterprise Council.

**VIEW OUR PORTFOLIO**  
[WWW.NUCONTEXT.COM](http://WWW.NUCONTEXT.COM)











**NUCONTEXT IS DEVOTED TO PRODUCING AWESOME  
WORK AND CULTIVATING AN INCLUSIVE AND  
NURTURING SPACE FOR THE PEOPLE CREATING IT.**

**We are committed to telling diverse stories authentically - both in front and behind the camera.**

**NUCONTEXT**





We champion women, celebrate our BIPOC brothers and sisters,  
and recognize the power of positive representation for the  
**LGBTQ+ and LatinX communities.**



# NUCONTEXT IS THE RECIPIENT OF NUMEROUS AWARDS AND ACCOLADES.



## 2019 EMMY WINNER

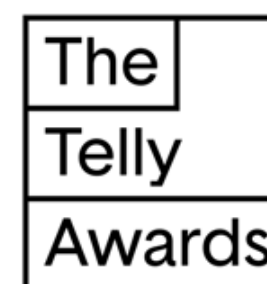
OUTSTANDING PROMO / BRAND IMAGE CAMPAIGN

DREAMWORKS + INTERNATIONAL WOMEN'S DAY  
SHE-RA AND THE PRINCESSES OF POWER

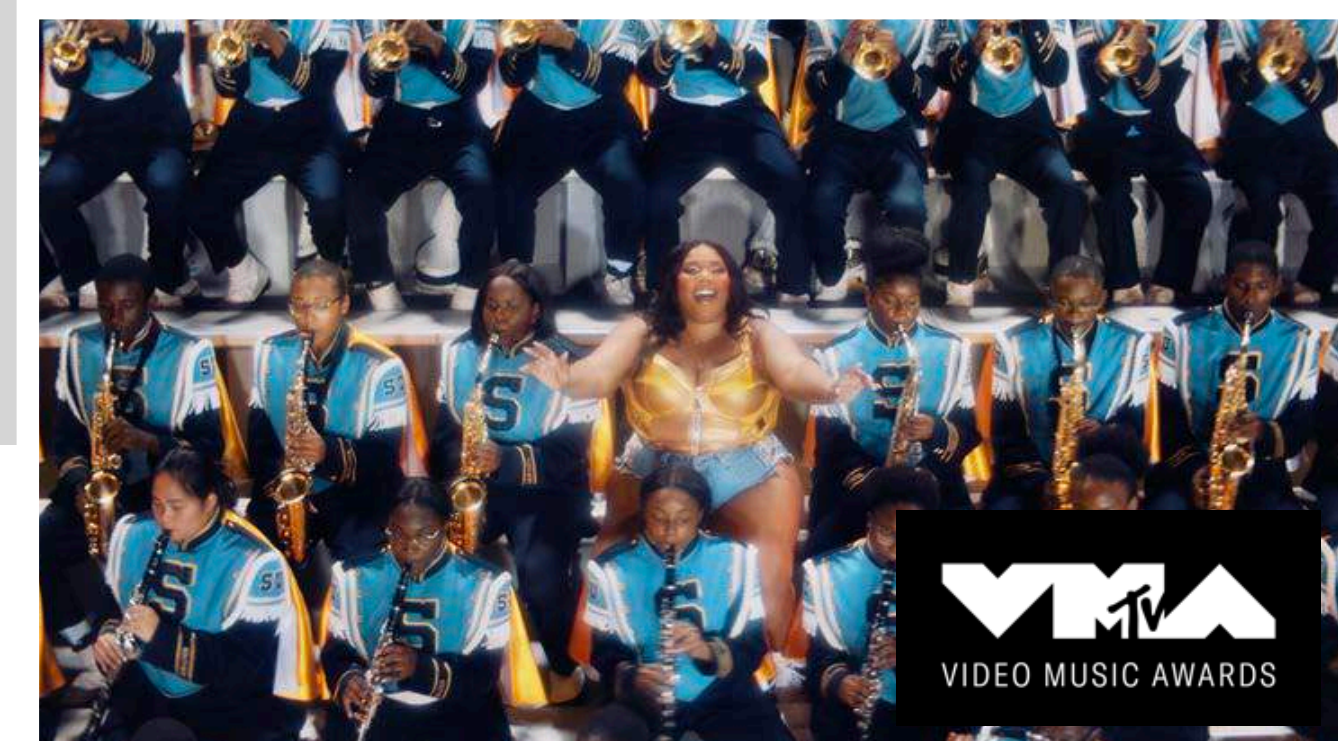
<https://vimeo.com/322055004>



**12 PROMAX GOLD AWARDS**



**8 GOLD TELLY AWARDS**



## 2020 MTV VMA NOMINEE

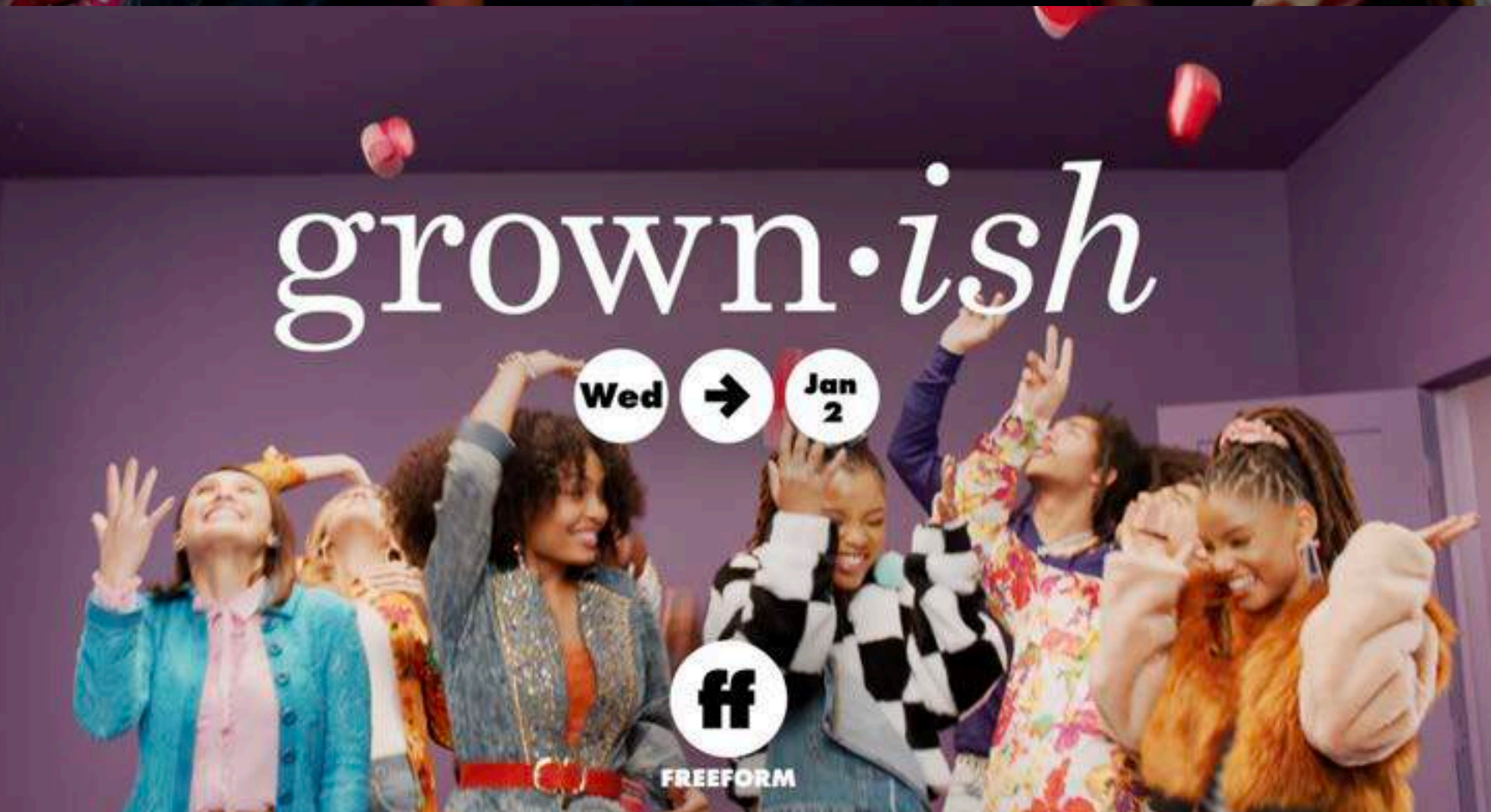
LIZZO "GOOD AS HELL"

<https://www.youtube.com/watch?v=vuq-VAiW9kw>



**NUMEROUS GOLD AND SILVER ADDY AWARDS**









Creating an inclusive and diverse work environment is not just something that's on trend, its in our DNA.

**NU**CONTEXT



# WBECWEST

WOMEN'S BUSINESS ENTERPRISE COUNCIL

JOIN FORCES. SUCCEED TOGETHER.



## 2018 NOMINEE

DIVERSE SUPPLIER OF THE YEAR

WOMEN'S BUSINESS ENTERPRISE COUNCIL WEST

NOMINATED BY THE WALT DISNEY COMPANY







We represent our values in the work we produce, and the creators and crew we hire to bring our campaigns to life.

**NU CONTEXT**



# ANGELA GUICE

## FOUNDER/EXECUTIVE PRODUCER

Emmy award winning Angela Guice is Executive Producer and Founder of Los Angeles based production company & creative agency, NUCONTEXT. Dedicated to telling diverse stories and working with filmmakers and creatives that span genres and specialties, Guice is proud to produce content that speaks to audiences authentically across all platforms.

Known throughout the industry for her long-standing relationships with top tier entertainment brands, sought after Directors and creatives, Guice has built NUCONTEXT into one of the most sought-after production agencies in the entertainment marketing business. Working with clients such as The Walt Disney Company, Netflix, Hulu, Viacom, Warner Media, NBCUniversal and Dreamworks, Guice and NUCONTEXT have won numerous industry awards including an Emmy, PromaxBDA, and Tellys and Addys among others.

Angela's journey sometimes takes her beyond television and film, and into the world of music, having produced music videos for Lizzo (nominated for a 2020 MTV VMA), Foo Fighters and Blink 182, and campaigns for Taylor Swift, Kanye West, Miley Cyrus, The Jonas Brothers, Nelly, T.I, Future, The RZA, Janelle Monet and Big Freedia.

Over her 20 years in the business, Guice has collaborated with a veritable “who’s who” of major Hollywood heavyweights. Among these have been such notables as Steven Spielberg, Robert Redford, Tyler Perry, Quentin Tarantino, Jennifer Aniston, Steve Martin, Kevin Hart, Will Ferrell, Jack Black, Reese Witherspoon, Denzel Washington, and Vice President Joe Biden, to name a few.





# OUR PRODUCTION TEAM



**ANGELA GUICE**  
Executive Producer



**MIKAEL TYRSEN**  
Creative Director / Director



**JESSIE MARCUS**  
Producer



**GREG WEINBRECHT**  
Producer



**CHAD ENGEL**  
Producer



**RACHEL OLIVER**  
Production Manager



**KENDOYSA PRATT**  
Production Manager



**ROBERT BYRD**  
Production Coordinator





**AKASHA ROSS**  
Production Coordinator



**NOEL HENRY**  
Production Coordinator



**MICHAEL ROLA**  
Talent Coordinator



**PAULA NEVES**  
Social Media Manager



**AMY CLEMENS**  
Office Manager



**DAN MONTES**  
Audio Engineer



**CHAD PEIKEN**  
Sr. Post Producer / Editor



**CODI VEAL**  
Production Assistant